

Towards common European criteria on accessibility of the built environment: Outcomes of Mandate M/420

Technical performance criteria and specifications: FprCEN/TR 17621

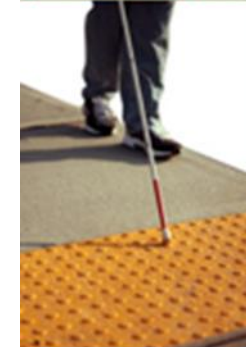
Monika Klenovec, PT Leader
Soren Ginnerup, PT

22nd March 2021 M/420 Workshop

FprCEN/TR 17621 is a Technical Report

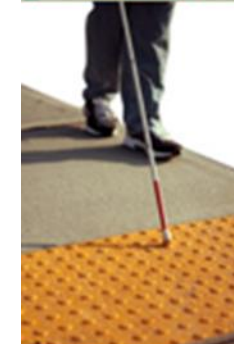
This implies:

- is not a European standard with requirements; **no obligation at national level!**
- **informative content** (‘state of the art’ examples); technical criteria show **example(s) to fulfil the functional requirements / recommendations of EN 17210** (with same structure)
- **Figures show examples of ‘good practice’** reflecting ISO 21542, ENs or solutions in different countries
- is not a stand-alone document and to be used alongside with the EN
- **alternatively to be replaced by national standards / regulations etc.**



Sources of information

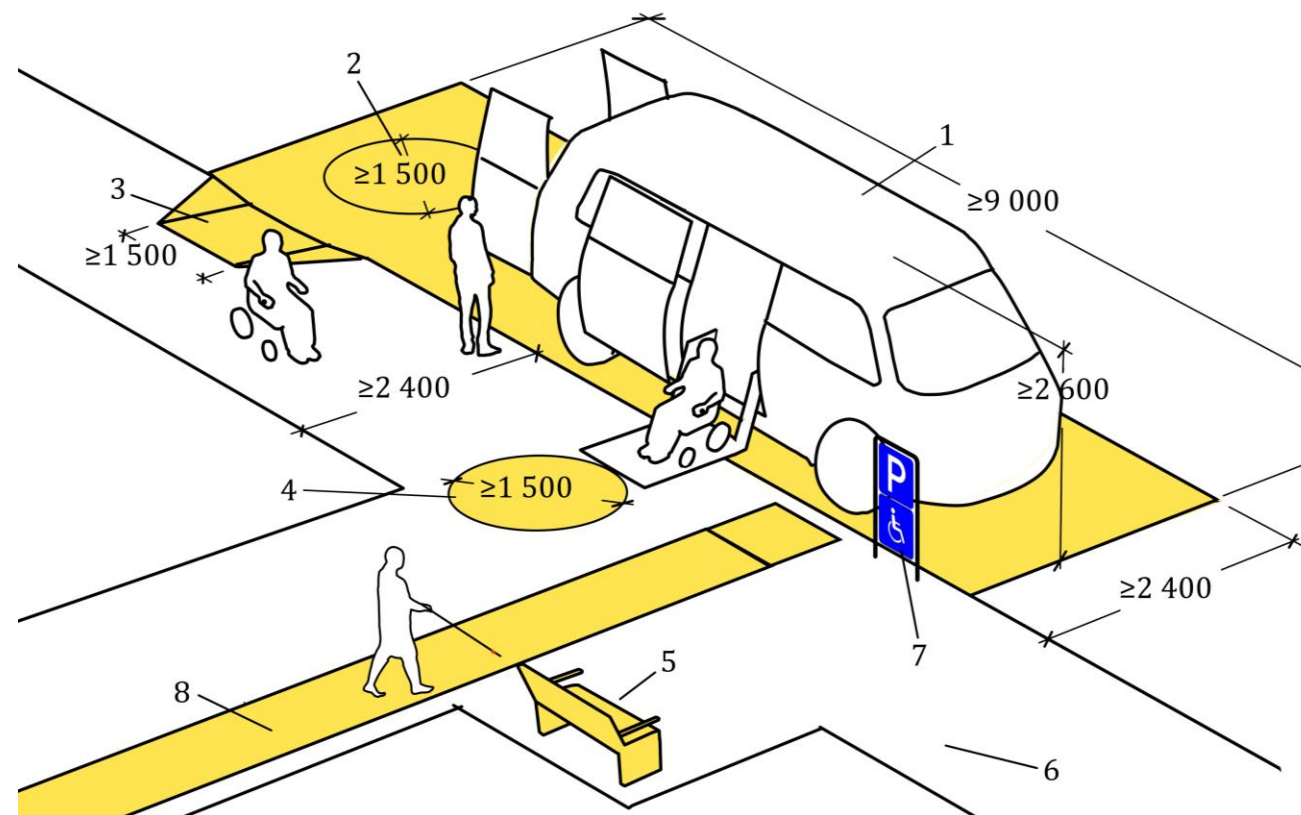
- a) Main source of information: **ISO 21542 (2011/2020)**
- b) Additional sources include (referenced):
 - ENs on Railway Applications for Infrastructure
 - Other specific ENs and product related ENs
 - National standards
 - Guidance on a specific matter



FprCEN/TR 17621, example descriptive key texts

Boarding points example:

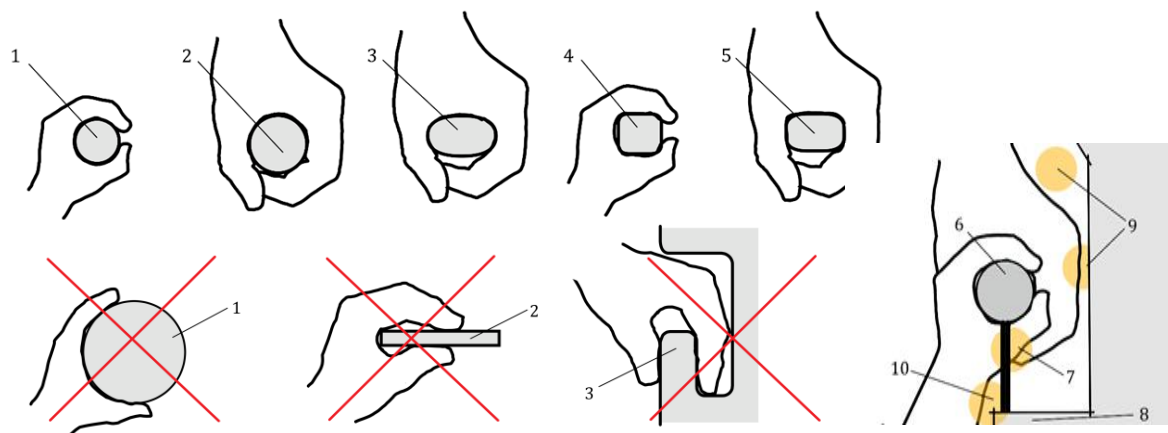
1. minibus or taxi
2. manoeuvring space for rear entry or exit using lift or ramp
3. kerb ramp, provision of TWSIs according to national regulation, if relevant
4. manoeuvring space for side entry or exit using lift or ramp
5. seating for pedestrians waiting
6. footway
7. designated parking or taxi signage
8. tactile walking surface with guiding pattern



10.3 Handrails – EN 17210 versus FprCEN/TR 17621

10.3.5 Profile of handrails

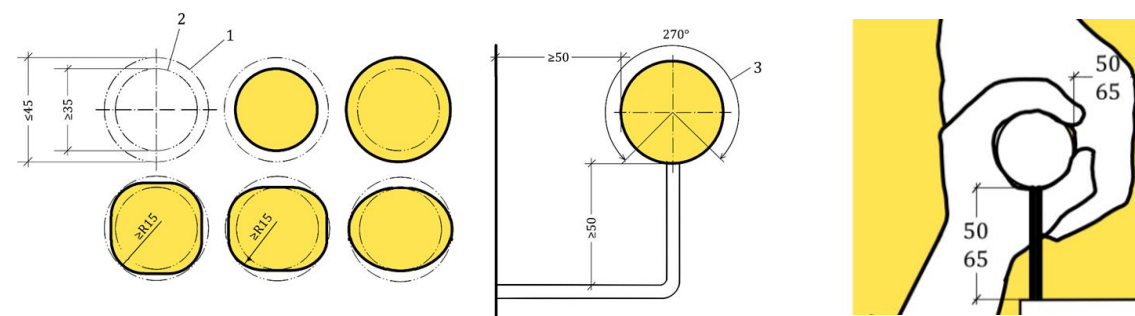
- a) The size and profile of the handrail shall allow easy grip for adults and children.
- b) Handrails shall have a surface which provides adequate resistance to hand slippage and does not cause damage or injuries to user's hands.....



Examples of handrail profiles suitable for adults and children

10.3.5 Profile of handrails

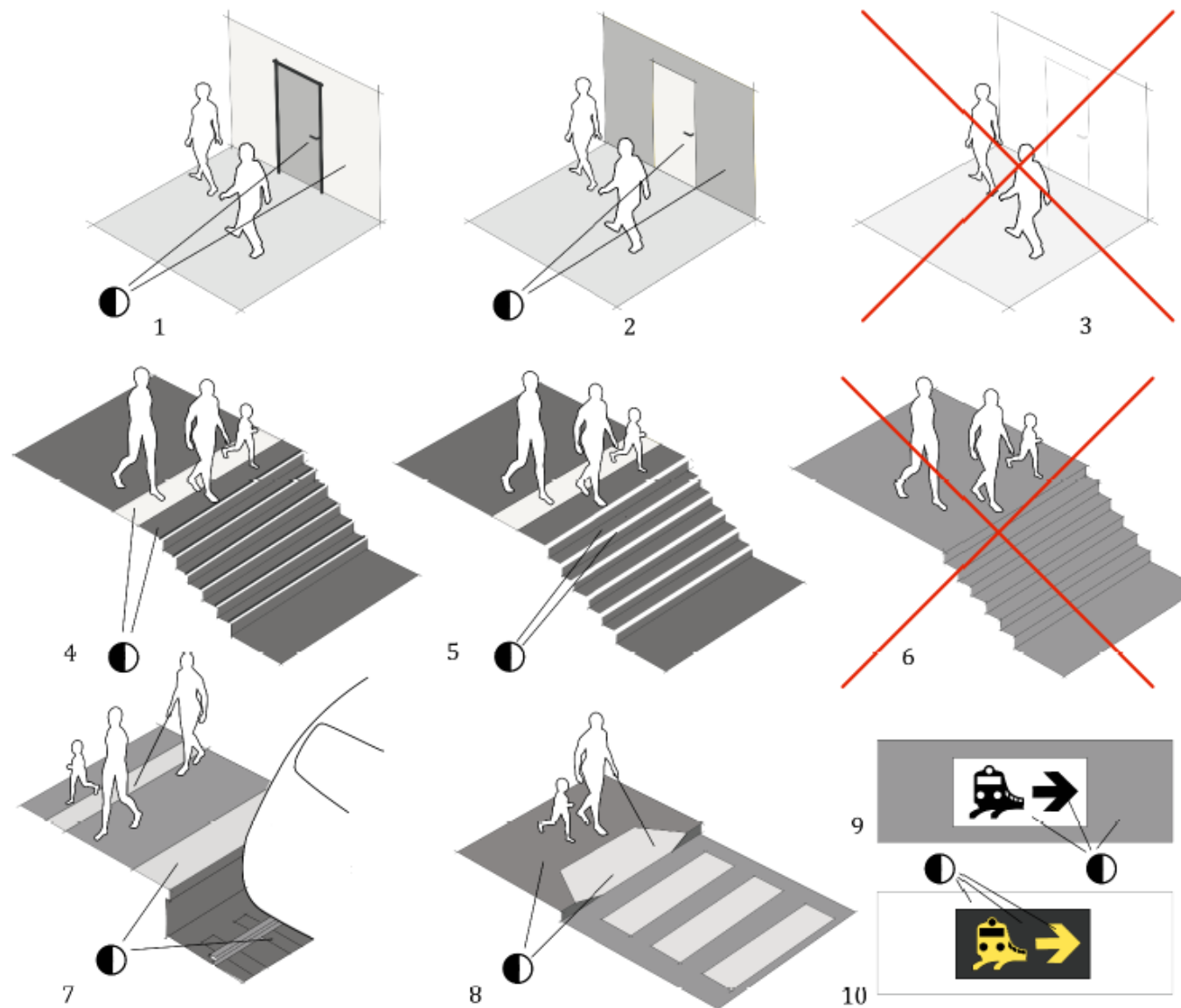
- a) A rounded or elliptical profile that can be inscribed into a 45 mm circle, and subscribed to a 35 mm diameter circle, with a radius of the rounded edges minimum 15 mm.
- b) Handrail surface with smooth finish and no sharp edges, that facilitates the grip and sliding of the hand....



Examples of handrail profiles, support and clearance

FprCEN/TR 17621 general examples, visual contrast

Examples of elements requiring medium and high visual contrast for detectability and/or legibility



FprCEN/TR 17621 detailed examples, visual contrast

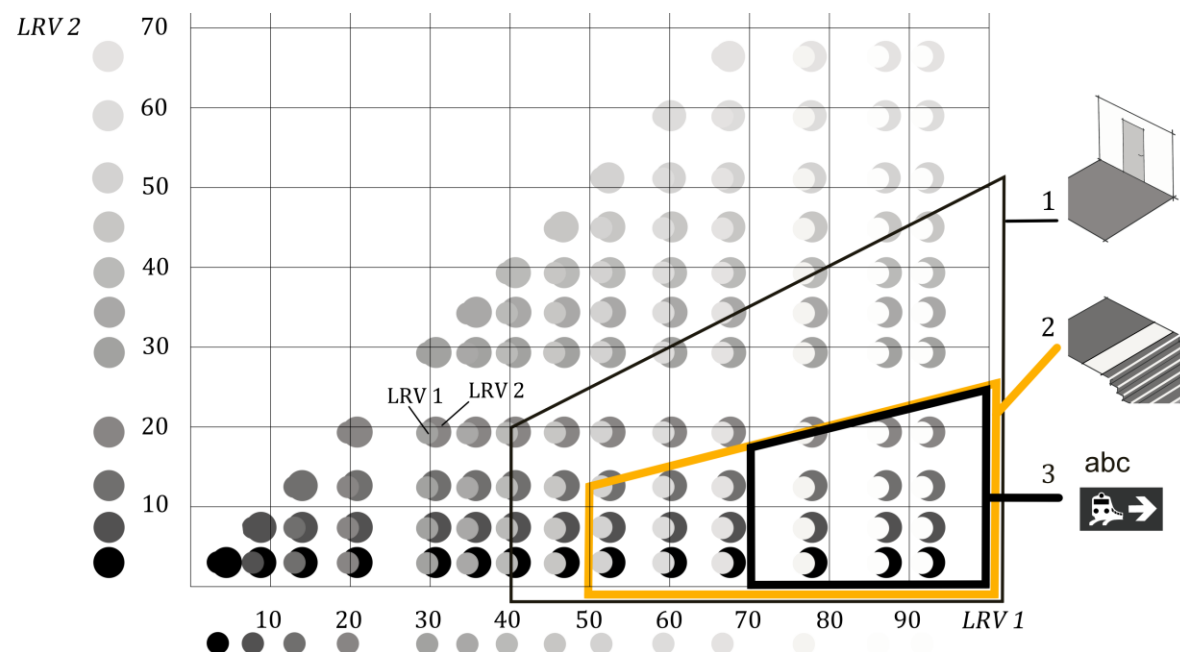


Diagram of accepted values for visual contrast, Michelson formula (ISO 21542)

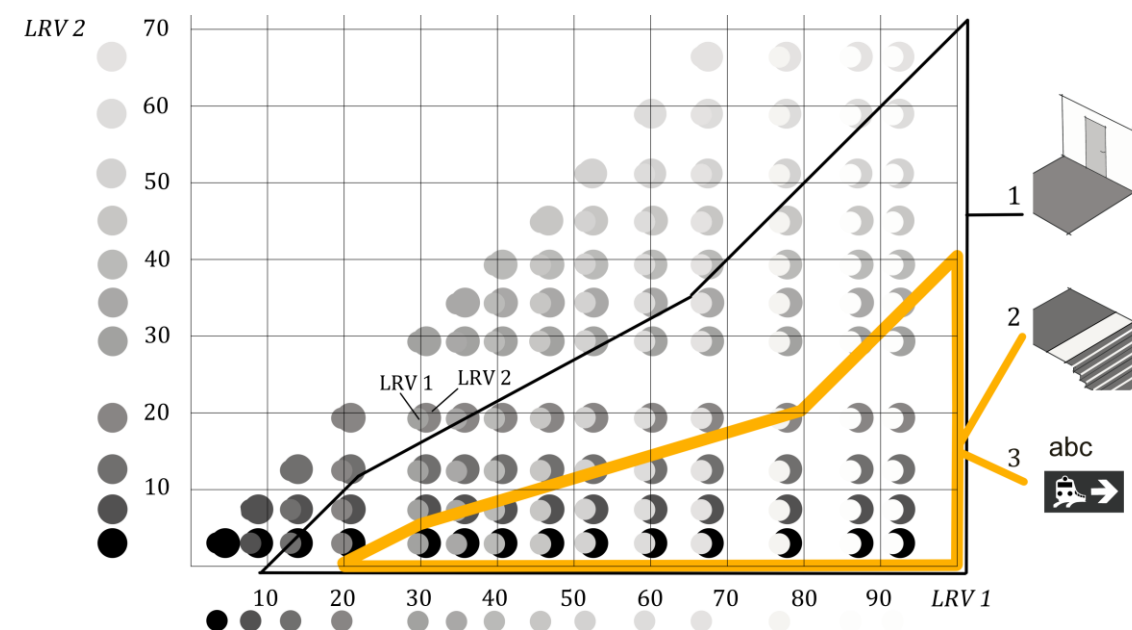


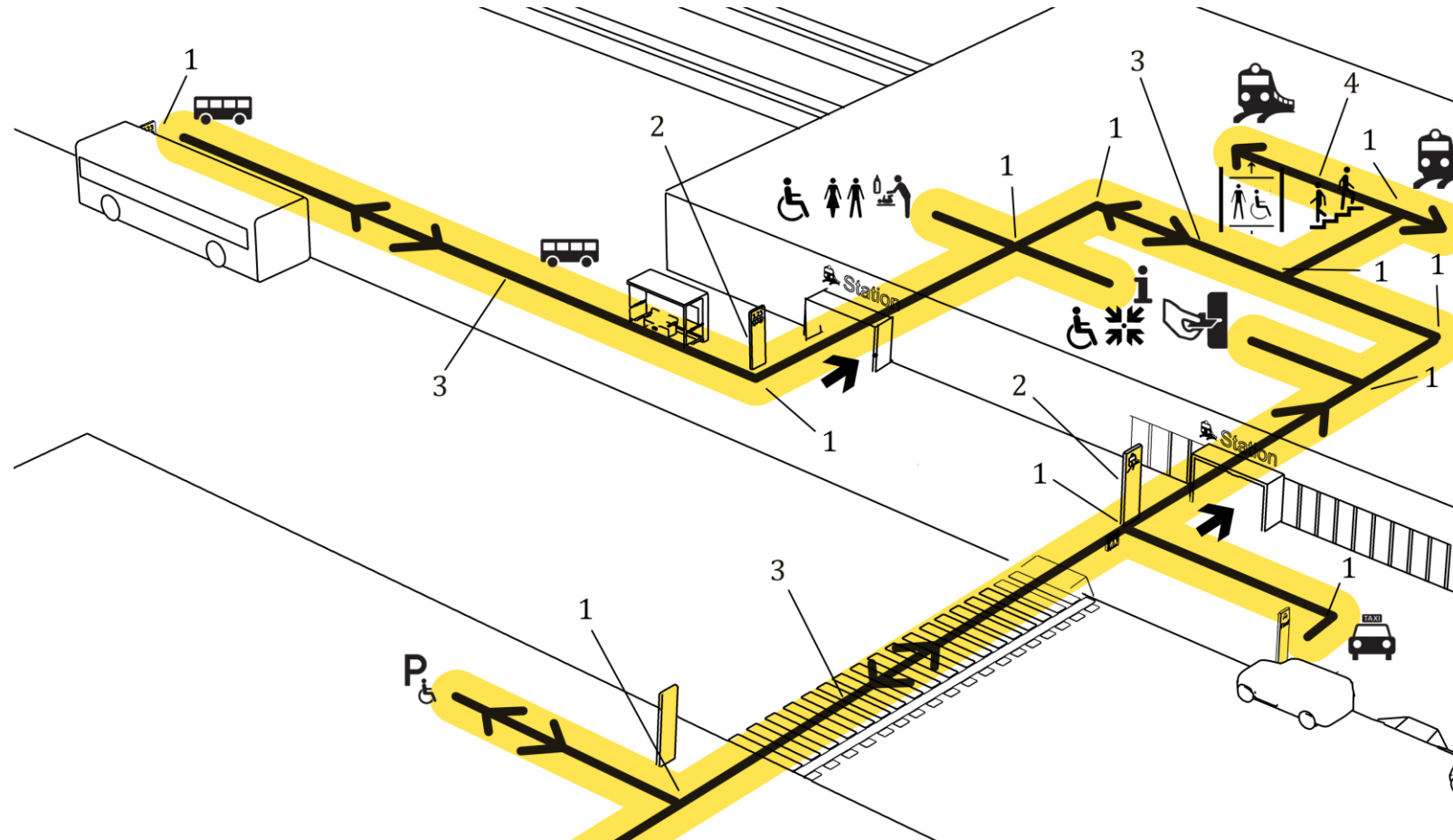
Diagram of European Railway infrastructure accepted values for visual contrast, composite formula (EN 16584-1)

A diagram of a pedestrian crossing on a road. The crossing is marked with yellow diagonal stripes. A white car is on the left, and a person with a cane is on the right. A white pole is in the center. The diagram is labeled with numbers 1 through 6:

- 1: The yellow diagonal stripes of the crossing.
- 2: The white diagonal stripes of the crossing.
- 3: The white car.
- 4: The person with a cane.
- 5: The white pole.
- 6: The white diagonal stripes of the crossing.

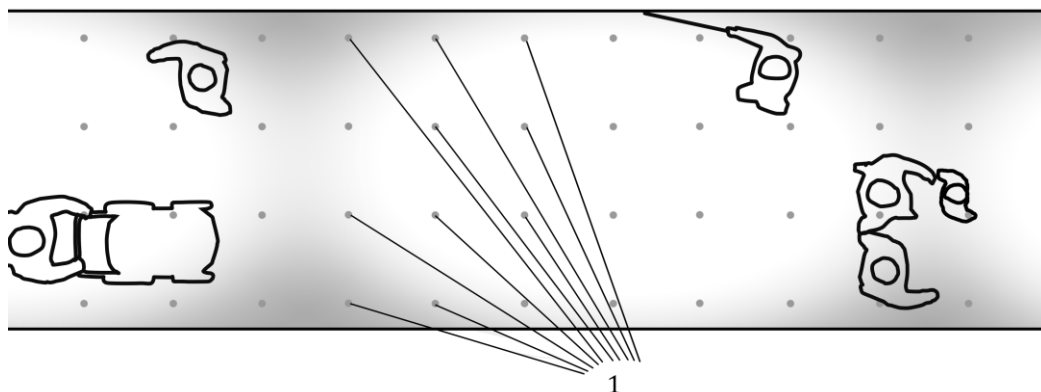
©2021 CEN – all rights reserved

FprCEN/TR 17621 guiding to relevant standards

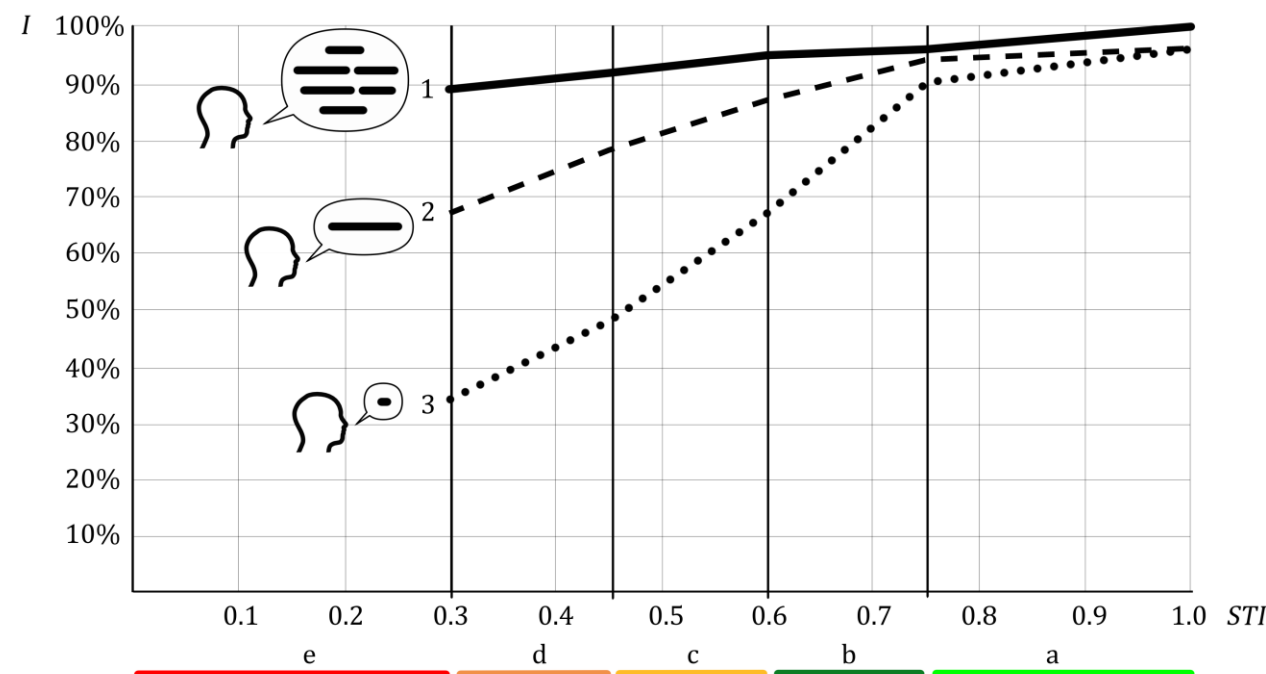


Wayfinding and railway infrastructure: EN 16584-2

FprCEN/TR 17621 guiding to lighting / acoustic standards

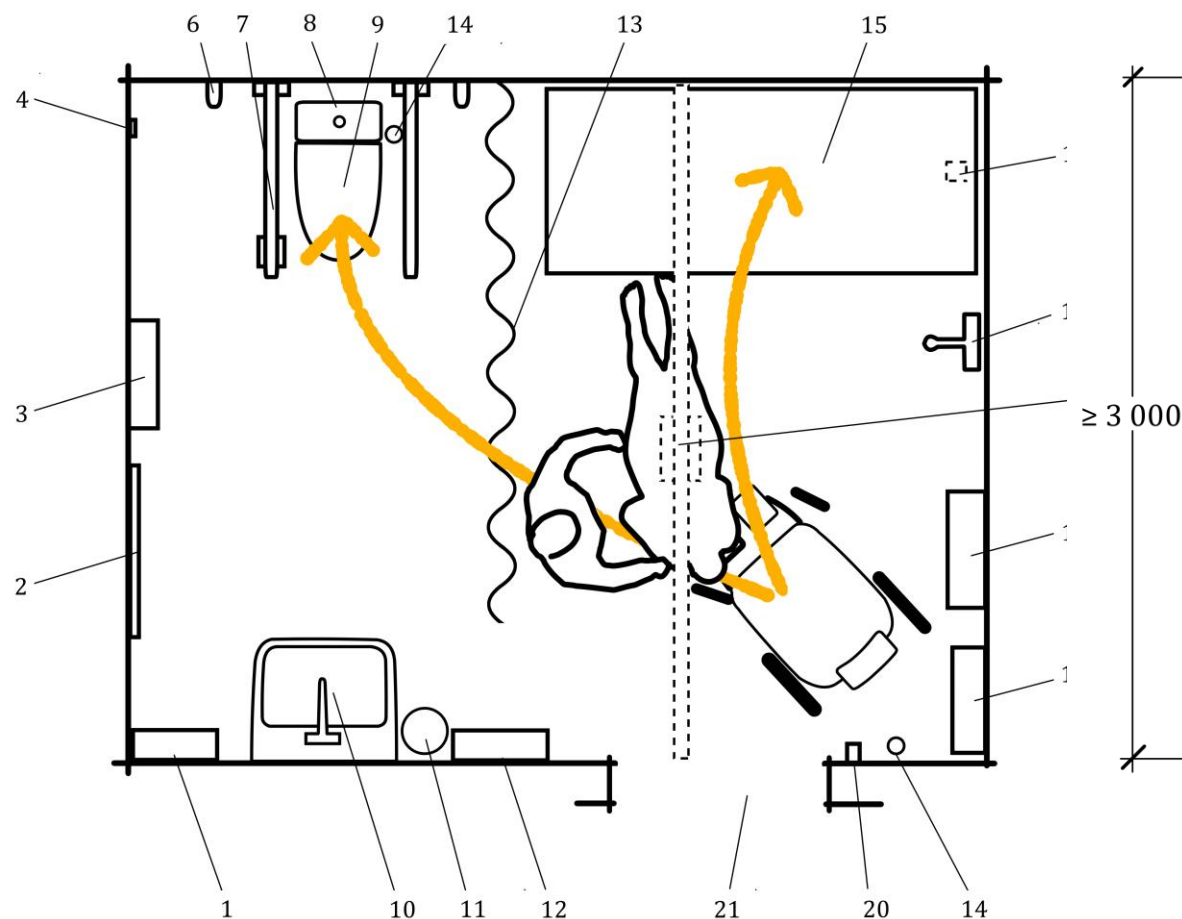


Lighting levels and uniformity: EN 12464-1

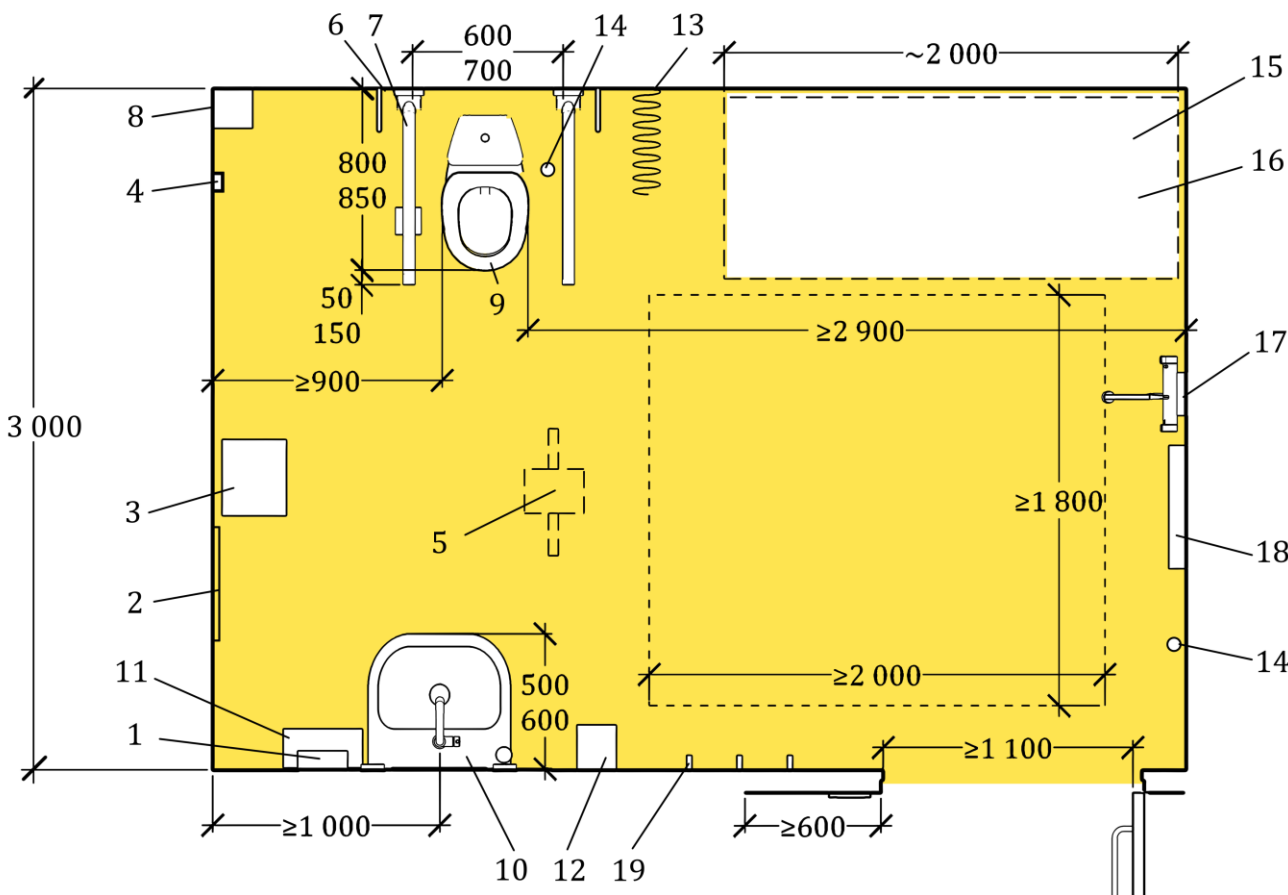


Acoustics and speech intelligibility: EN 60268-16

Example information EN 17210 versus FprCEN/TR 17621

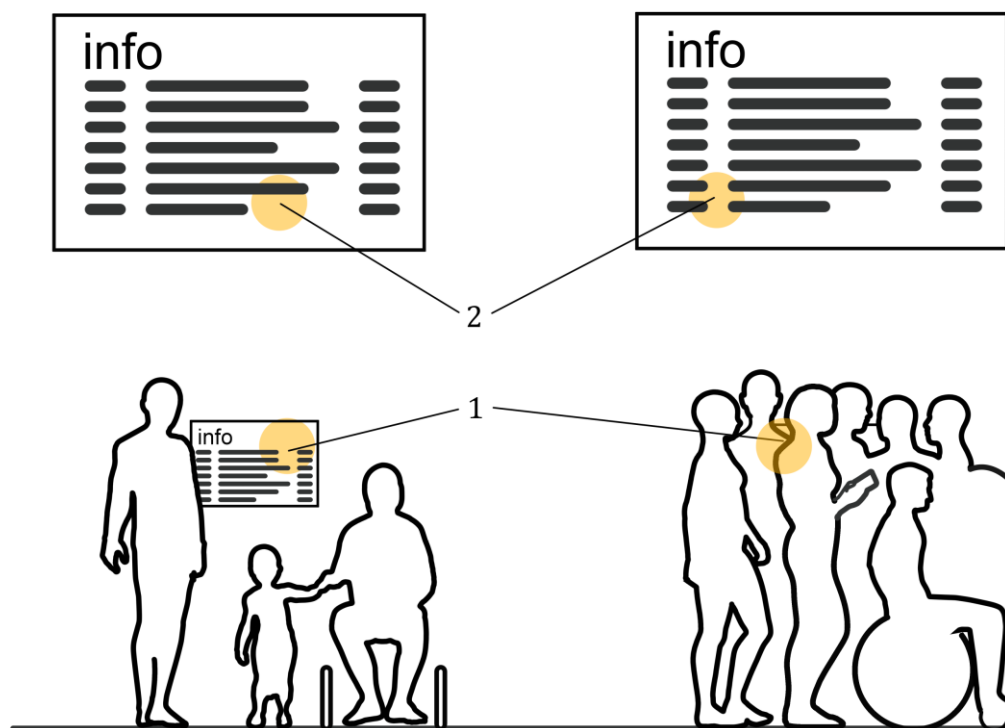


Example functionality of a changing places facility, EN 17210
©2021 CEN – all rights reserved

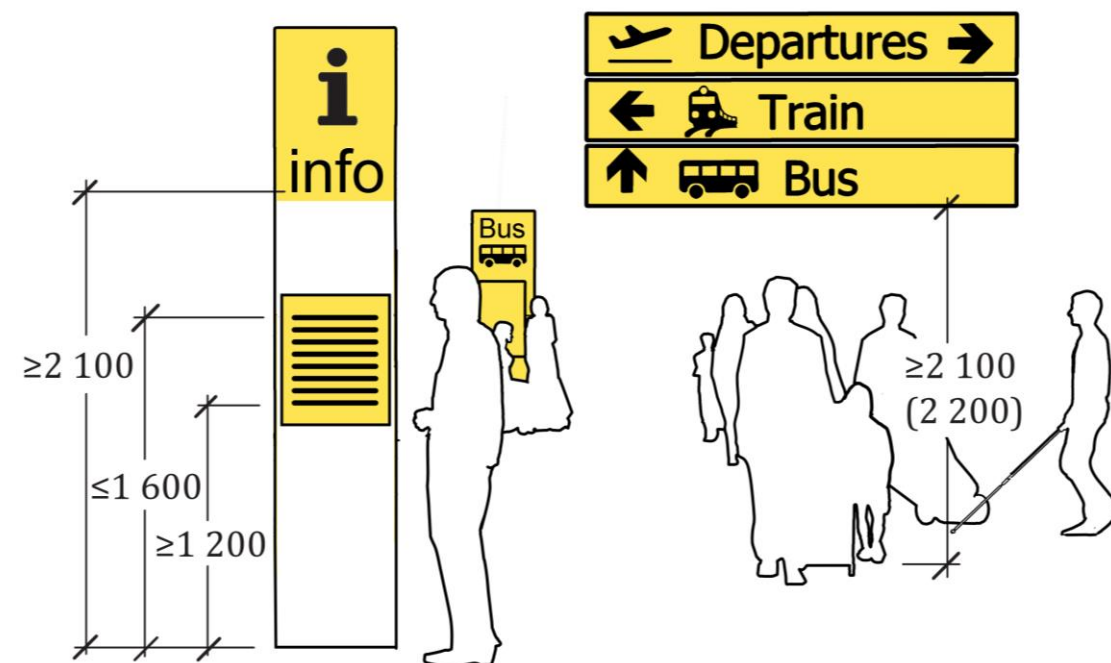


Example dimensions and details of a changing places facility,
FprCEN/TR 17621

Example of EN 17210 versus FprCEN/TR 17621

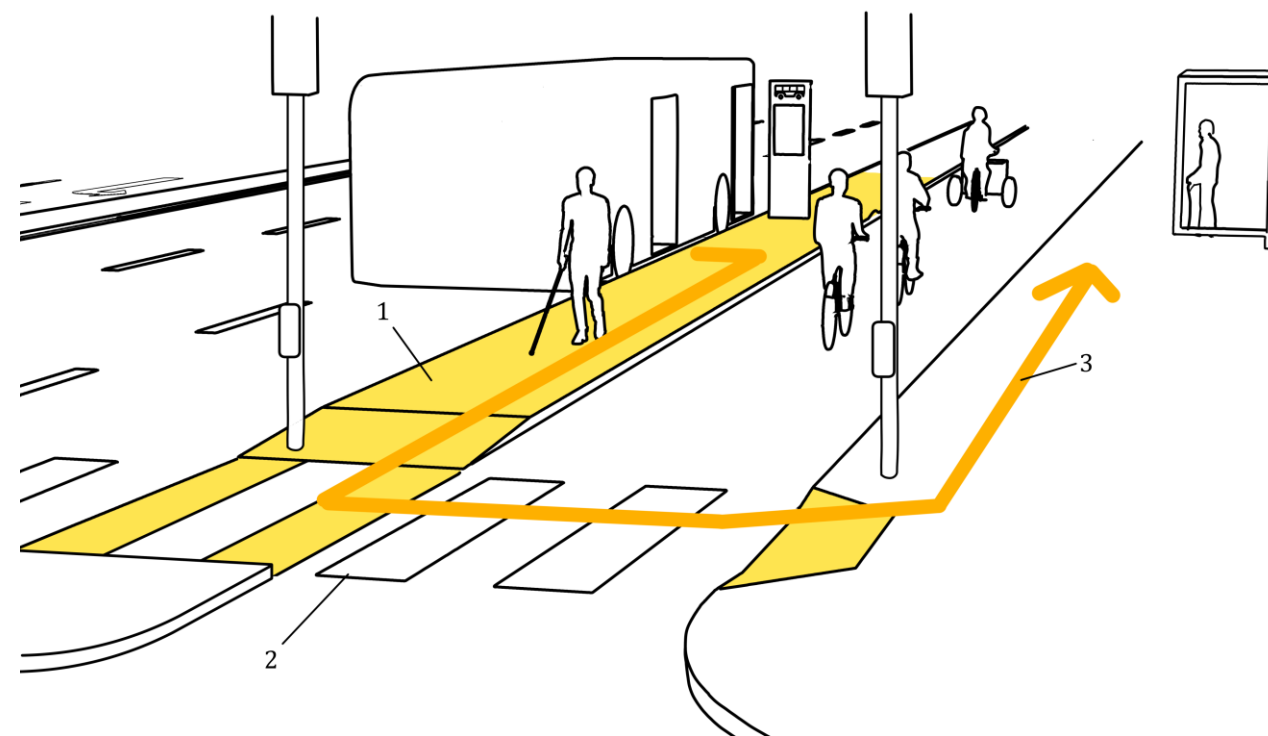


Example of screens at different heights, EN 17210



Example of placement of signage, including dimensions, FprCEN/TR 17621

- Example of accessible route to and from bus shelter, footway and bus stop platform via controlled pedestrian crossing, FprCEN/TR 17621



1. bus stop platform separated from footpath by bike lane
2. pedestrian crossing connected to bus stop platform
3. route to and from bus stop shelter via pedestrian crossing

Standardization documents are not enough!

Further implementation of accessibility & design for all criteria in the built environment by public procurement, architects, facility managers and building legislation is needed – based on prEN 17210

Thanks for your attention! Questions?

Contact: CEN/CENELEC JTC 11 Secretariat via Fernando Machicado Martin <fmachicado@une.org>

Let's make a society of all ages and diversities a reality in an accessible and usable built environment!

